

# KELLY TANKS

## Product Library

01889 508944

[www.kellytanks.co.uk](http://www.kellytanks.co.uk)

[info@kellytanks.co.uk](mailto:info@kellytanks.co.uk)

CONCRETE WASHOUTS

ADSORPTION SACK & FRAMES

WATER TREATMENT SYSTEMS

pH CONTROL & REMOTE MONITORING

BESPOKE UNITS & SYSTEMS

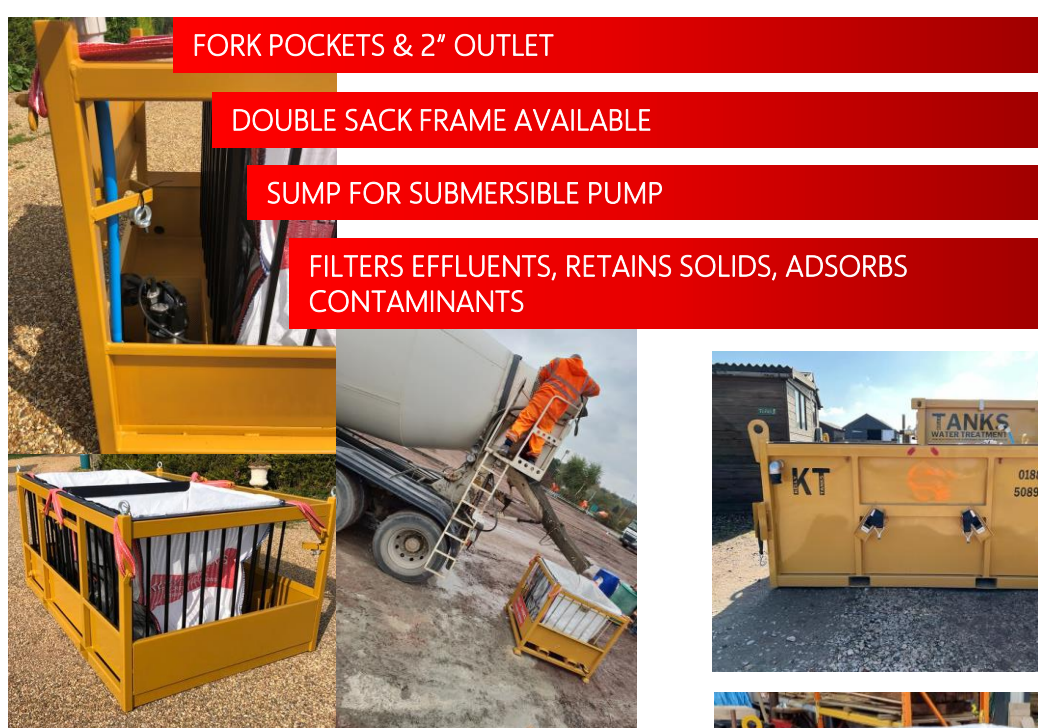
CONCRETE SKIPS & WASHOUT FRAMES

HYDRODEMOLITION SYSTEMS

DOSING & AGITATION

Innovative, cost-effective  
concrete washout and  
water treatment solutions





## BENEFITS

- COST EFFECTIVE ALTERNATIVE TO SUCTION WAGONS AND LANDFILL WASTE
- SACKS CAN BE PURCHASED SEPARATELY
- SIMPLE TO SET UP, SIMPLE TO EMPTY, SIMPLE TO OPERATE
- SOLIDS ARE RETAINED IN SACK, MAKING THEM EASY TO DISPOSE OF
- CAN BE USED FOR CONCRETE WASHOUT OR WATER TREATMENT

# KELLY TANKS

Heavy duty sacks, ideal for onsite waste. Specially designed to allow the fast flow of water whilst retaining solids and adsorbing contaminants. **Ideal for washing concrete equipment off into and other onsite waste disposal.**

Can also be used to empty settlement tank and filter waste water. Sacks can be used in conjunction with a Frame to allow drained water to be pumped to discharge point or reintroduced back into water treatment systems.

Frame	Dims (mm) approx.	Weight approx.
Single	1450 (L) 1240 (W) 1010 (H)	300kg
Double	2220 (L) 1440 (W) 1100 (H)	600kg

## Adsorption Sack & Frame

For Hire, Sales or more info call us on **01889 508944**



**DOUBLE & ENCLOSED SACK FRAMES ALSO AVAILABLE**



# TANKS

CLOSED LOOP CYCLE/WASH  
WATER IS RECYCLED

NO HAZARDOUS WATER  
IS GENERATED

SIMPLE TO SET UP,  
SIMPLE TO EMPTY,  
SIMPLE TO OPERATE

SOLIDS ARE RETAINED IN  
SACK MAKING THEM EASY  
TO DISPOSE OF



1. Use the hose to wash off chute/equipment into Adsorption Sack
2. Water passes through Adsorption Sack, where solids are retained
3. Water is then pumped back into system, to be re-used.



Separates  
solids &  
Neutralises  
pH

## Simple Solutions for washing off concrete wagon chutes and equipment

A cost effective alternative to skips & suction wagons, the CWS allows concrete equipment to be washed off onsite by separating the solids in the wash water and recycling the remaining water. pH can be easily neutralised if required.

Dims (mm) approx.

Weight approx.

2140 (L) 1520 (W) 1030 (H) 720kg

## CWS Concrete Washout

For Hire, Sales or more info call us on 01889 508944

Power Required

Consumables

110V  
min 2.75kVa

- Adsorption Sack
- pH Neutraliser (optional)



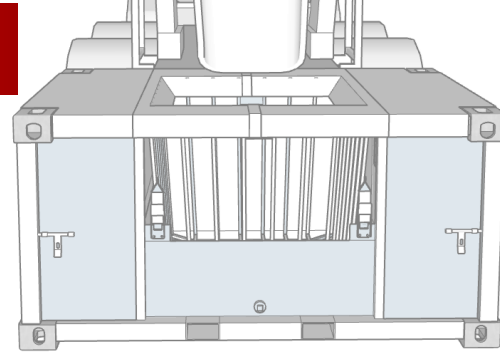
CLOSED LOOP SYSTEM

WASTE WATER IS RECYCLED

PH IS AUTOMATICALLY  
CONTROLLED

SOLIDS ARE RETAINED IN  
ADSORPTION SACK

SIMPLE TO SET UP, SIMPLE TO USE,  
SIMPLE TO EMPTY



# KELLY TANKS

The 'Ultra' incorporates a high volume pump to supply optimum hose pressure for washoff and auto pH control (CO<sub>2</sub>).

Concrete equipment can be safely washed off onsite. Solids are separated from the wash water and retained within the Adsorption Sack. The remaining water is then continuously recycled and pH is neutralised with CO<sub>2</sub> being automatically diffused directly into the recycled washwater.



## Basic Operation

1. Use the water/ hose to wash off chute/equipment into Adsorption Sack
2. Water passes through Adsorption Sack, where solids are retained
3. Water is then pumped back into system, wherein pH is automatically corrected before being recirculated for indefinite re-use.

## Dims (mm) approx.

2350 (L) 1640 (W) 1030(H)

## CWS Ultra

For Hire, Sales or more info call us on 01889 508944





LAMELLA COALESCING MEDIA,  
CAN BE USED WITH FLOCCULANT



OIL SKIMMER & OPTIONAL  
HYDROCARBON FILTER PADS

SIMPLE TO SET UP, SIMPLE TO  
EMPTY, SIMPLE TO OPERATE

SOLIDS EMPTIED VIA DUMP VALVE  
FOR EASY CLEANING

**USER FRIENDLY  
EXTRAS**  
STEPS, SKIMMER,  
FLOCC CAGE, TAPS  
& TELEMTRY  
POINTS



# KELLY TANKS

Universal treatment tank with interchangeable coalescing media to suit all applications.

Ideal solution when dewatering and dealing with stubborn suspended solids. The coalescing/lamella media provides over 100sq mtr of settling area and encourages settlement of all types of silt. Can be used with or without Flocculant. Media can be provided with varying diameter openings making the WTS the perfect system for any application.

System	Dims (mm) approx.	Weight approx.
WTS	2880 (L) 1560 (W) 1510 (H)	820kg
WTS XL	4020 (L) 1830 (W) 2140 (H)	1320kg
WTS XXL	4940 (L) 2370 (W) 2260 (H)	2200kg
XXL LH	4210 (L) 2210 (W) 3250 (H)	3200kg

## WTS Water Treatment

For Hire, Sales or more info call us on 01889 508944



CAN BE USED WITHOUT POWER

SIMPLE TO SET UP, SIMPLE TO EMPTY, SIMPLE TO OPERATE

HEAVY SOLIDS ARE RETAINED IN SACK, MAKING THEM EASY TO DISPOSE OF

MANIFOLD AVAILABLE-  
EASILY REMOVABLE  
ENABLING  
WAGONS/PUMPS TO  
DISCHARGE OR WASH  
DIRECTLY INTO TANK



1. Filtration and Retention of heavy solids
2. Dosing & Agitation
3. Coalescing Media/Lamella Clarifier to settle suspended solids



IDEAL HEIGHT FOR  
WAGONS TO  
WASH DIRECTLY  
INTO



Power Required

Consumables

No Power Required  
or 110V (if dosing)

- Adsorption Sack
- Dosing Agents (optional)

# KELLY TANKS

## THIS TANK CAN DO IT ALL..

**Concrete Washout** Used for washing off concrete or grout equipment, mixers, piling rig equipment, concrete skips and volumetric wagons adsorbs the solids and uses purpose built coalescing to clean concrete wash water. Dosing unit can be fitted to neutralise pH automatically.

**Water Treatment - Lamella Clarifier – Settlement – Dosing & Agitation – Flocculation & Filtration** An adsorption sack retains and filters heavy solids, making them easy to dispose of. A dosing & agitation unit can be fitted for pH neutralisation, flocculation or dosing of any required chemicals. The coalescing media can be easily changed to suit the application and characteristics of waste water to settle any suspended solids.

Dims (mm) approx.

Weight approx.

3340 (L) 1580 (W) 1050 (H)

1300kg

## GWS Hybrid

For Hire, Sales or more info call us on 01889 508944





SPECIFICALLY DESIGNED FOR  
HYDRODEM WASTE

EASY TO SET/CHANGE  
PH PARAMETER TO ACHIEVE  
DESIRED PH

SOLIDS RETAINED IN  
ADSORPTION SACK

AUTO PH CONTROL &  
CORRECTION



The pH level of wastewater is automatically monitored by a pH probe situated in the inlet pipework. If the pH level is above the pre-set parameters, CO2 is diffused until the desired pH level is achieved. The water then deposits into a Kelly Tanks Adsorption Sack wherein solids are retained before passing through purpose built coalescing media to aid the settlement of any remaining suspended solids. This system also allows for secondary pH dosing (between KT Adsorption Sack & Coalescing Media) if required.

#### Power Required

110V / 16amp

#### Consumables

Adsorption Sacks  
CO2

# KELLY TANKS

## Compact Hydrodem pH Control System

The small but mighty build of this system makes it an ideal solution for Hydrodem wastewater treatment. Fork pockets have been installed on three sides to enable easy transportation (often transported in the back of a transit)

#### Dims (mm) approx.

1970 (L) 1040 (W) 1140 (H)

#### Weight approx.

595kg

## GWS Compact

For Hire, Sales or more info call us on **01889 508944**





MANUAL HANDLING

ADJUSTABLE HEIGHT &  
POSITIONING OF DIFFUSER

EASY TO SET/CHANGE  
PH PARAMETER TO ACHIEVE  
DESIRED PH

TURBULENT DIFFUSER FOR  
OPTIMUM CO2 DISTRIBUTION

CAN BE FITTED TO MOST TANKS



# TANKS

Modular dosing units to monitor and automatically adjust pH

Units are fitted to existing tanks, skips or Kelly Tanks Water Treatment Tanks and held in position by adjustable fixing points. pH probe is removed from holder and inserted into working position. Diffuser is positioned in desired location.

When the pH probe reads pH outside the pre-set parameter, CO2 is automatically diffused until desired pH is achieved.



1. Fit to tank/skip
2. Connect 110V power
3. Set desired pH parameters
4. Position diffuser
5. System is ready, pH will be automatically monitored and corrected.

Dims (mm) approx.

Variable – enquire for more info

## pH Dosing Unit

For Hire, Sales or more info call us on 01889 508944

Power Required

Consumables

110V  
min 2.75kVa

• CO2





SIMPLE TO SET UP, SIMPLE TO  
EMPTY, SIMPLE TO OPERATE

HEAVY SOLIDS ARE RETAINED  
IN SACK, MAKING THEM EASY  
TO DISPOSE OF

LAMELLA/COALESCING TO  
SETTLE SUSPENDED SOLIDS

PH ELECTRODE & DOSING  
SYSTEM TO CONTROL PH



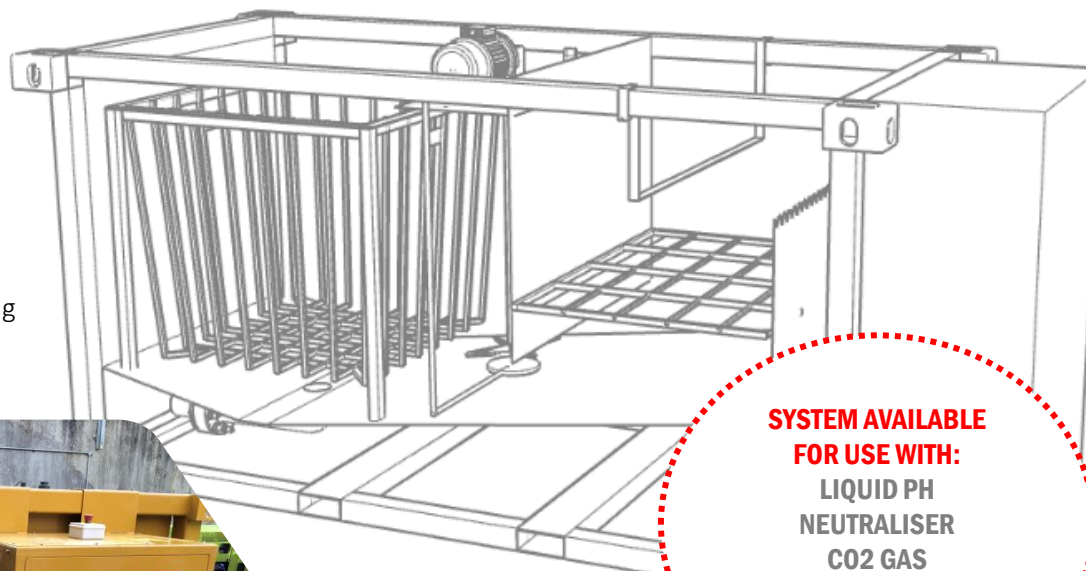
IDEAL FOR  
TREATING HIGH  
PH ALKALINE  
WASTE WATER

# KELLY TANKS

A simple solution for retaining solids and correcting pH in waste water, ideal for Hydrodem Waste Water.

A modular system consisting of a Water Treatment Unit with Adsorption Sack to capture solids, pH electrode to test pH level and mixer and dosing unit to correct pH.

1. Wastewater is washed into Absorption Sack wherein solids are retained
2. pH electrode initialises dosing and mixer to correct pH
3. Liquid flows through coalescing media, forcing any solids to clump together and settle out



SYSTEM AVAILABLE  
FOR USE WITH:  
LIQUID PH  
NEUTRALISER  
CO2 GAS  
DUAL (LIQUID & GAS)

Dims (mm) approx.

Weight approx.

3150 (L) 1580 (W) 1860 (H)

1400kg

## Hydrodem System

For Hire, Sales or more info call us on 01889 508944



Power Required

Consumables

110V  
min 2.75kVa

- Adsorption Sack
- pH Neutraliser



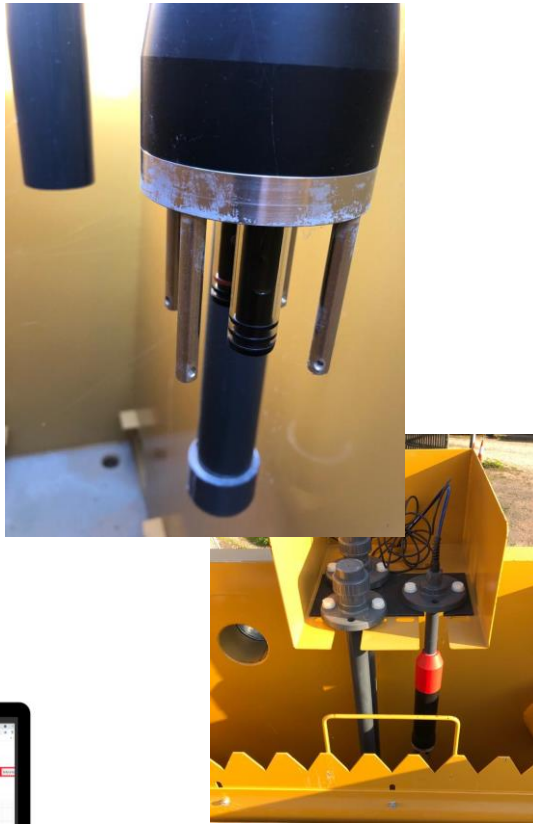
SIMPLE TO SET UP, SIMPLE TO  
EMPTY, SIMPLE TO OPERATE

AVAILABLE AS MODULAR ADD ON  
OR SELF CONTAINED TANK

OPTIONAL AUTO SELF CLEANING  
ELECTRODES

OPTIONAL ELERT/ALARM SYSTEM

- **pH Monitoring**
- **TSS (Total Suspended Solids) Monitoring**
- **Remote Data Logging**



# KELLY TANKS

Real time monitoring and data logging  
equipment to measure and log quality of  
water.

Remote Monitoring System (RMS) pH & TSS  
probes are installed in the final compartment  
of the WTS system, data is immediately  
viewable on unit and fed back to dedicated  
website for remote monitoring and data  
logging.

AVAILABLE FOR HIRE OR PURCHASE WITH THE KELLY TANKS  
WTS XXL LH SYSTEM



## KEY FEATURES

- AUTO CLEANING TSS  
PROBE -
- REALTIME REMOTE  
MONITORING-
- USB DATA DOWNLOAD -

CAN ALSO BE SUPPLIED  
IN A MODULAR UNIT



Power Required

110V  
min 2.75kVa

Consumables

- CO2 (optional) to keep  
electrodes auto cleaned

## WaterQuality Monitoring

For Hire, Sales or more info call us on 01889 508944





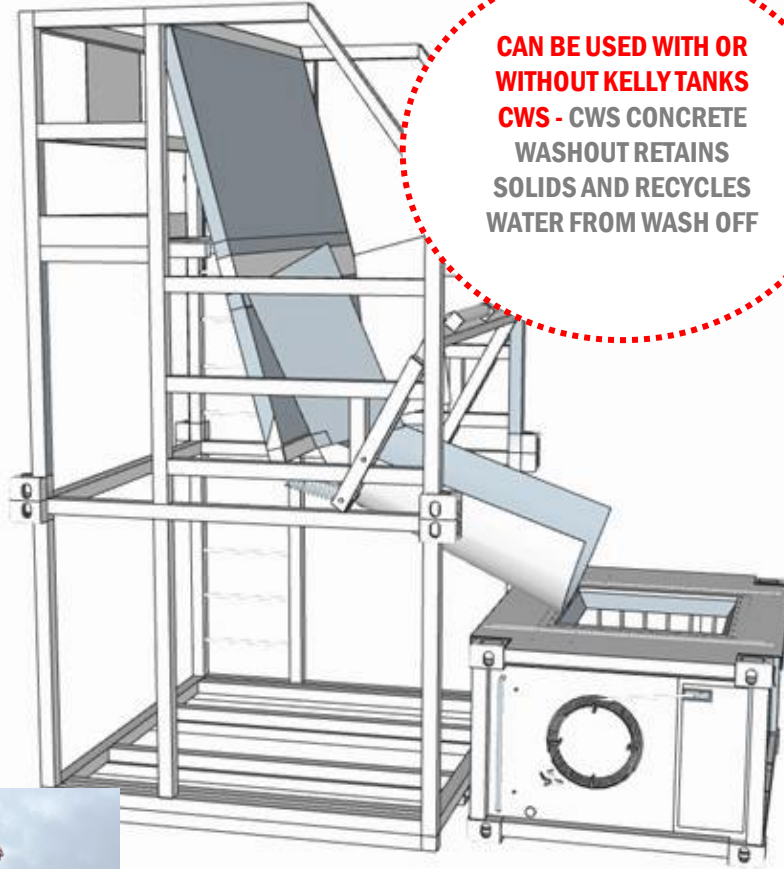
SIMPLE TO SET UP,  
SIMPLE TO OPERATE

SAFE WASHOFF  
OR STORAGE

FITS ANY SKIP  
UPTO 2000LTR

ROBUST WITH  
FORK POCKETS  
& LIFTING EYES

NO MANUAL  
ADJUSTMENT REQUIRED



CAN BE USED WITH OR  
WITHOUT KELLY TANKS  
CWS - CWS CONCRETE  
WASHOUT RETAINS  
SOLIDS AND RECYCLES  
WATER FROM WASH OFF

# KELLY TANKS

The ideal solution for washing out Concrete Skips onsite

Designed with a unique mechanism to allow different size skips to slot into position without manual adjustments. Spring action loaded bar that adjusts automatically to accommodate different size skips.

Concrete Skip Washout Frame compatible with Kelly Tanks Concrete Washout System & various size Concrete Skips to create environmentally safe, easy to use, washout recycling system.

Dims (mm) approx.

Weight approx.

2480 (L) 2200 (W) 4255 (H)

1300kg



COLUMN SKIPS ALSO AVAILBE  
TO HIRE OR PURCHASE



## Concrete Skip Frame

For Hire, Sales or more info call us on 01889 508944



FORK POCKETS ON THREE SIDES

RETAINING PINS ENABLING TRAY  
TO BE TIPPED

SWIVEL LIFTING EYES ON  
EACH CORNER

ROBUST WITH FLAT  
BOTTOM FLOOR

2" BALL VALVE & BAUER  
FITTING OUTLET

**IDEAL FOR CONCRETE  
PUMPS – CAN BE USED  
IN CONJUNCTION WITH  
THE CONCRETE  
WASHOUT TO RETAIN  
SOLIDS AND RECYCLE  
WATER**



# KELLY TANKS

Simple, easy to move/manoeuvre  
Washout Tray for capture and  
disposal of waste.

Also available in bespoke sizes –  
enquire for quote.

**Dims (mm) approx.**

**Weight approx.**

2380 (L) 1500 (W) 400 (H)

160kg

2200 (L) 2200 (W) 700 (H)

300kg

## Washout/Pump Tray

For Hire, Sales or more info call us on 01889 508944





# KELLY TANKS



As we design and build all of our products we can work with you to ensure you get the exact product you require that meets all of your onsite needs

Any of our range can be sprayed in Customer colours at no extra cost

We can bespoke build/design systems and units to suit your requirements.

Please contact us today to discuss what we can do for you.



## Bespoke Builds & Add Ons

For Hire, Sales or more info call us on 01889 508944





**Thank You**

☎ 01889 508944

✉ [info@kellytanks.co.uk](mailto:info@kellytanks.co.uk)

🌐 [www.kellytanks.co.uk](http://www.kellytanks.co.uk)

**CONCRETE  
WASHOUT**